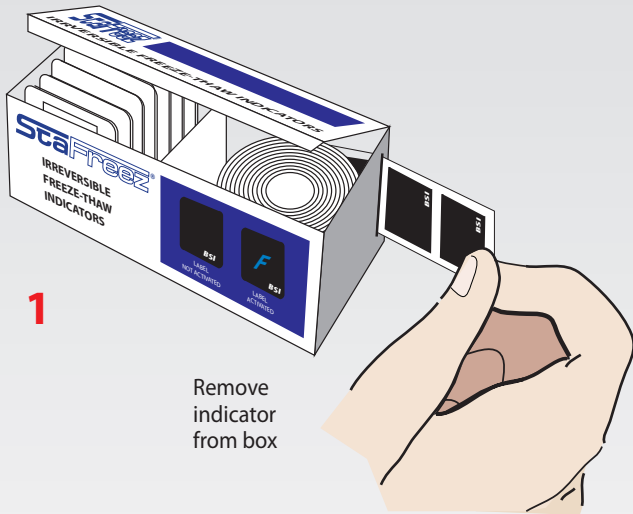


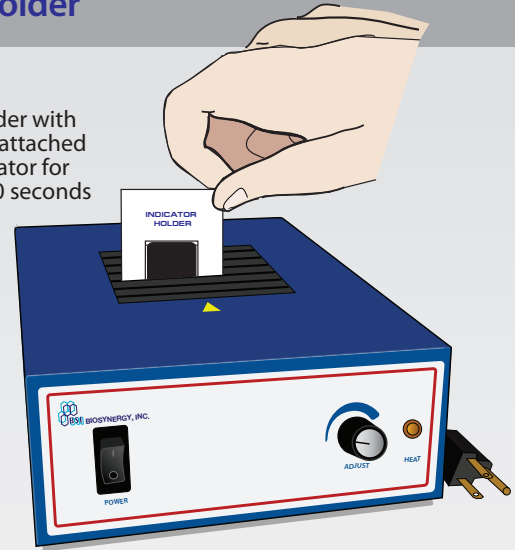
Directions for using the indicator holder



**1**

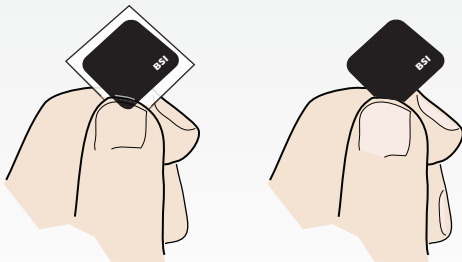
Remove indicator from box

**4** Place holder with indicator attached into activator for at least 60 seconds



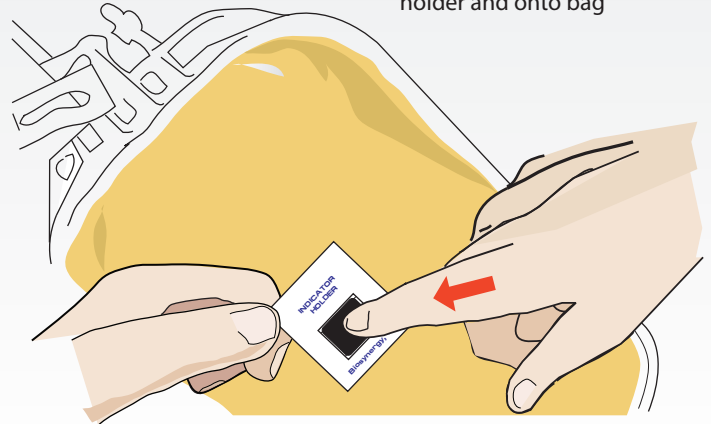
**2**

Place thumb under indicator and remove protective backing



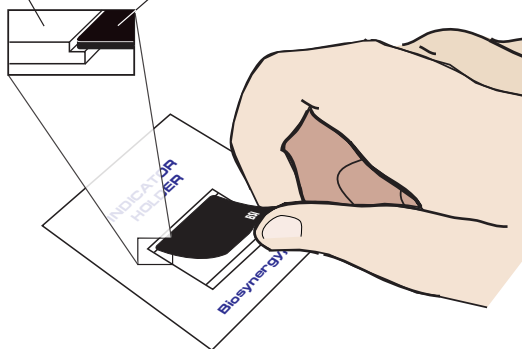
**5**

Hold indicator over bag and press activated indicator through holder and onto bag



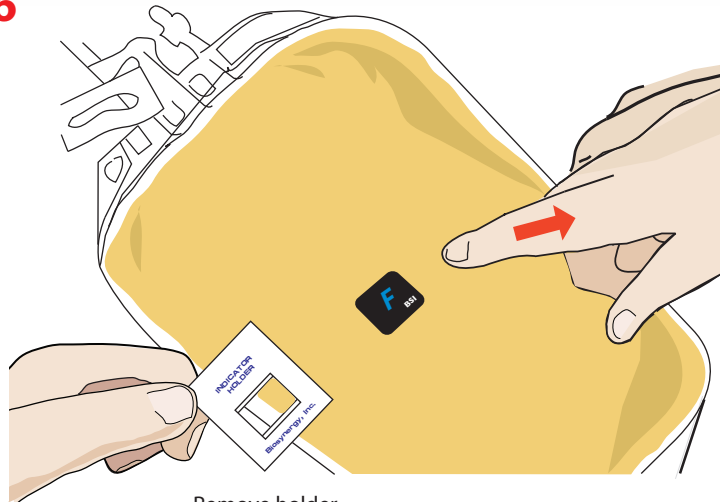
**3**

Holder Indicator



Gently place indicator onto holder

**6**



Remove holder. Indicator has been activated and pressed onto bag

